

DISINFECTING EQUIPMENT

RESCUE[®] APPROVED
DISINFECTANTS



Disinfecting Equipment for Clinics, Pet Boarding, and Shelters

To make your disinfection protocols easier, faster, and more convenient, Rescue® Disinfectants partner with equipment experts, including Lafferty, to offer a wide selection of equipment, including application equipment, dilution equipment and accessories.

The equipment listed is compatible with Rescue® Concentrate and Rescue® Ready-to-Use solutions formulated with Accelerated Hydrogen Peroxide®, available through your Rescue® Disinfectant distributor.



HOSE END FOAMERS (AUTOMATIC DILUTION)

Hose-end foamers make using Rescue® Concentrate easy by providing even coverage of the solution and automatically dispensing the right dilution. They help save time, reduce wasted solution, ensure compliance and work great for applying to large areas. Simply fill the tanks with Rescue® Concentrate and connect the units to your city water supply.

MODEL 250 HOSE END FOAMER / COMPACT AIRLESS FOAMER



Recommended Application/Use:

- Large Dog Runs
- Larger Kennels
- Play Areas & Large Equipment

Key Features:

- Heavy-duty stainless steel ball valve is durable and easy to operate
- Attaches to standard garden hose or 1/2" water connections
- Creates rich, wet foam which prolongs surface wetness and effectiveness
- Foam provides visual verification that all areas are covered
- Projects foam up to 12' (depending on water pressure)
- Model 250 is held by the valve/hose area rather than a handle/trigger gun feature

Standard Foamer Includes:

- Machined polypropylene foamer body
- 32 oz bottle
- Heavy-duty bottle lid
- 20 color-coded metering tips, to ensure the correct dilution is dispensed
- Stainless steel ball valve
- Stainless steel 4-hole rinse nozzle

Foamer Kit Includes:

- All standard foamer items
- Spreader nozzle
- Storage rack
- Precise Test strips, to ensure the foamer is properly calibrated and dispensing the correct dilution

PRODUCT	CLIPPER #
Model 250 Compact Airless Foamer Kit - Blue Lid	VC-1010
Model 250 Compact Airless Foamer Kit - Red Lid	VC-1015
Model 250 Compact Airless Foamer - Standard - Blue Lid	969930-B32
Model 250 Compact Airless Foamer - Stainless Steel - Blue Lid	969930SS-B32



TIP: Water pressure varies widely. Test strips are **highly recommended** to set up and to periodically confirm desired dilutions.

TIP: Workplace Labels are available to label your containers to ensure occupational health and safety and for easy identification.

Requirements:

Water – Temperature – up to 160°F
 Pressure – 20 - 100 PSI
 Flow – 1.25 GPM @ 40 PSI
 Supply Line – 1/2"

Foamer Accessories:

See page 6 for more information.

**MODEL 25 HOSE END FOAMER /
COMPACT AIRLESS FOAMER**


PRODUCT	CLIPPER #
Model 25 Compact Airless Foamer Kit - Blue Lid	VC-1000
Model 25 Compact Airless Foamer Kit - Red Lid	VC-1005
Model 25 Compact Airless Foamer - Standard- Blue Lid	969925-B32
Model 25 Compact Airless Foamer - Standard - Green Lid	969925-B32-G

Foamer Accessories:

See page 6 for more information.

Overview:

The difference between Model 25 over Model 250, is that this unit comes with a trigger hose gun for easier carrying and application.

Recommended Application/Use:

- Large Dog Runs
- Larger Kennels
- Play Areas & Large Equipment

Key Features:

- Model 25 has a trigger hose gun fitting, making it easy to point and shoot
- Attaches to standard garden hose or 1/2" water connections
- Creates rich, wet foam which prolongs surface wetness and effectiveness
- Foam provides visual verification that all areas are covered
- Projects foam up to 12' (depending on water pressure)
- Higher projection of foam, preferred for larger areas

Standard Foamer Includes:

- Machined polypropylene foamer body
- Quick connect adapter SS
- 32 oz bottle
- Heavy-duty bottle lid
- 20 color-coded metering tips, to ensure the foamer is properly calibrated and dispensing the correct dilution
- Garden hose gun with inlet screen/filter

Foamer Kit Includes:

- All standard foamer items
- Spreader nozzle
- Storage rack
- Precise test strips, to ensure the foamer is properly calibrated and dispensing the correct dilution

Requirements:

Water – Temperature – up to 160°F
 Pressure – 20 - 100 PSI
 Flow – 1.25 GPM @ 40 PSI
 Supply Line – 1/2"

**MODEL 15 HOSE END FOAMER /
COMPACT AIRLESS FOAMER**


PRODUCT	CLIPPER #
Model 15 Compact Airless Foamer- Standard - Blue Lid	969920-B32

Foamer Accessories:

See page 6 for more information.

Overview:

Model 15 is similar to Model 25 as the unit also comes with a trigger hose gun for easier carrying and application. However, Model 15 is designed for smaller areas as it projects foam to 7' rather than 12'.

Recommended Application/Use:

- Smaller Kennels
- Small Play Areas & Equipment

Key Features:

- Model 15 also has a trigger hose gun fitting, making it easy to point and shoot
- Attaches to standard garden hose or 1/2" water connections
- Creates rich, wet foam which prolongs surface wetness and effectiveness
- Foam provides visual verification that all areas are covered
- Projects foam up to 7' (depending on water pressure)

Includes:

- Machined polypropylene foamer body
- Quick connect adapter SS
- 32 oz bottle
- Heavy-duty bottle lid
- 20 color-coded metering tips, to ensure the foamer is properly calibrated and dispensing the correct dilution
- Garden hose gun with inlet screen/filter

Requirements:

Water – Temperature – up to 160°F
 Pressure – 20 - 100 PSI
 Flow – 0.7 GPM @ 40 PSI
 Supply Line – 1/2"

MIXING STATIONS (AUTOMATIC DILUTION AND DISPENSING)

Mixing stations make using Rescue® Concentrate simple and efficient by automatically providing the right dilution every time. These units reduce wasted solution, save time, increase compliance, prevent direct handling of the concentrate solution and ensure consistent dilution. The units dispense the solution directly into your secondary containers, such as spray bottles, mop buckets, and pump-up foamers.

1-WAY BALL VALVE MIXING STATION



Recommended Application/Use:

1-Way Ball Valve Mixing Stations allow for one dilution ratio and high flow setting.

PRODUCT	CLIPPER #
1-Way Ball Valve Mixing Station High Flow Rate	VC-1060

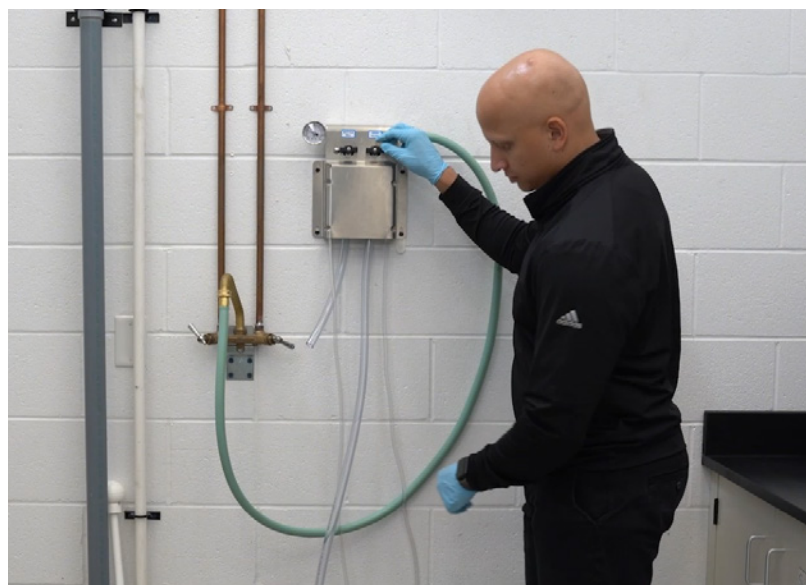
2-WAY BALL VALVE MIXING STATION



Recommended Application/Use:

2-Way Ball Valve Mixing Stations allow for two dilution ratios if desired, a bottle fill option and a high flow setting, for larger containers such as mop buckets.

PRODUCT	CLIPPER #
2-Way Ball Valve Mixing Station High Flow and Bottle Fill Valves	VC-1065



Key Features:

- Eliminates manual mixing and optimizes chemical utilization, employee safety and labor efficiency
- Chemical resistant components ensure years of outstanding performance with minimal maintenance
- Industrial-strength design holds up in tough environments
- Water pressure gauge eliminates guessing, reduces set-up time and helps with troubleshooting
- Dilution ratio controlled with precision metering tips
- Dilution ratio for each valve on multi-valve stations can be set independently
- Draws Rescue® Concentrate from any sized container

Includes:

- Stainless steel mounting bracket
- Activation ball valve(s)
- Polypropylene injector body
- Integrated brass back-flow preventer
- Easy-to-read water pressure gauge for accurate tip selection
- 20 color-coded metering tips for setting dilution ratios
- 6' chemical suction tube with strainer
 - 1-way: 1 tube
 - 2-way: 2 tubes
 - 3-way: 3 tubes
- 4.5' open flow discharge tube
 - 1-way: 1 tube
 - 2-way: 2 tubes
 - 3-way: 3 tubes
- 10' blue water hose with garden hose fitting, can be cut to size
- Filter/Washer for blue water hose
- Clamp ring to attach blue hose to station
- Precise Test Strips

Requirements:

Water

Temperature – up to 160°F
 Pressure – 25 – 125 PSI
 Supply Line – 1/2" minimum

Flow

High Flow (Black Injector) – 4.0-7.3 GPM
 Low Flow (White Injector) – 1.9-3.4 GPM
 Bottle Fill (Blue Injector) – 0.6-1.0 GPM



TIP: Water pressure varies widely. Test strips are **highly recommended** to initially set-up mixing stations and to periodically confirm desired dilutions.

3-WAY BALL VALVE MIXING STATION**Recommended Application/Use:**

3-Way Ball Valve Mixing Stations allow for three dilution ratios if desired, a bottle fill option, a low flow option and a high flow setting, for larger containers such as mop buckets.

PRODUCT

3-Way Ball Valve Mixing Station
High Flow, Low Flow & Bottle Fill Valves

CLIPPER #

VC-1070

PUMP UP FOAMERS (PRE-DILUTED CONCENTRATE SOLUTION)

Pump-up foamers are a convenient way to apply pre-diluted Rescue® Concentrate, providing consistent foam that clings to surfaces for thorough cleaning and disinfecting. Pump-up foamers are ideal for areas without easy access to water sources or for facilities with weak water pressure. They are portable and easy to use with a heavy-duty hose, trigger gun and extension wand.

PUMP UP FOAMER PRO**1.5 Gallon****3 Gallon****PRODUCT**

Pump Up Foamer Pro 1.5 Gallon

Pump Up Foamer Pro 3 Gallon

CLIPPER #

925004

925005

Recommended Application/Use:

- More portable option, work around if you don't have a hose/water source readily available

Key Features:

- Creates rich, clinging foam that adheres to surfaces longer to maximize chemical effectiveness
- Just fill the tank with pre-diluted Rescue® Concentrate chemical solution, pump it up and foam
- Heavy-duty, easy-grip trigger gun with locking latch
- Wide fan pattern nozzle for fast application

Includes:

- Heavy-duty HDPE tank
- Heavy-duty manual pump
- Viton/Nitrile seals and o-rings for commercial grade performance and life
- Pressure relief valve
- Machined foamer body
- 6' discharge hose
- Heavy-duty trigger with Viton internal seals
- Polypropylene 10" wand & stainless steel fan nozzle
- Compressed air tire valve for use with an air compressor – 3 gallon foamer

Requirements:

Ready to Apply Chemical Solution
Temperature – up to 120°F

Accepts Compressed Air (3 gallon foamer) – up to 45 PSI

RESCUE
**THE HIGHEST
 STANDARD IN
 DISINFECTANTS**

Effective against Parvo, Panleukopenia,
 Ringworm, Influenza, Kennel Cough & more!



For more information visit
RescueDisinfectants.com

Part of
FearFree
 Leaders in Animal Wellbeing

POWERED BY
ACCELERATED
 HYDROGEN PEROXIDE

MANUAL DISPENSING PUMPS

Hand pumps are an easy and safe method to dispense Rescue® into your secondary containers such as spray bottles, mop buckets, and more.

EZI-ACTION HAND PUMP
55G Rescue® Concentrate Drums
**Key Features**

- Outputs 13.5 oz. per stroke
- Chemical resistant construction
- Delivers on the up and down stroke
- Constructed from FDA compliant plastics
- Fully serviceable

PRODUCT

Ezi Action Pump - 55 Gallon

CLIPPER #

P20055

EZI-ACTION HAND PUMP
5G Rescue® Concentrate Containers
**Key Features**

- Outputs 6 oz per Stroke
- Chemical Resistant construction
- Delivers on the up and down stroke
- Constructed from FDA compliant plastics
- Fully serviceable

PRODUCT

Ezi Action Hand Pump - 5 Gallon

CLIPPER #

HDP012

DISPENSING PUMP
1G Rescue® Concentrate/Rescue Ready-To-Use
**Key Features**

- With metered settings the pump delivers 1 oz. of liquid per pump

PRODUCT

Dispensing Pump - 1 Gallon

CLIPPER #

0240501

TRIGGER SPRAYERS AND STORAGE BOTTLES**RESCUE® DUAL ACTION TRIGGER SPRAYER /FOAMER****Key Features**

- Designed for use with 32 oz. Bottles
- Durable and reusable
- Spraying or foaming option
- Close the mesh door for foaming action
- **Benefits of foaming include better surface coverage, slower evaporation, and reduced aerosolization**

PRODUCT

CAP065 Trigger Sprayer

CLIPPER #

CAP065

RESCUE® SCREEN-PRINTED BOTTLE**Key Features**

- Reusable 32-oz. workplace bottle for storing diluted Rescue® Concentrate
- Easily dispense when ready to use
- Foaming trigger sprayer included
- Use the dilution chart on bottle to keep track of the dilution rate, date diluted, and lot number

PRODUCT

Rescue® Screen-printed Bottle

CLIPPER #

233024

32 OZ BOTTLE**Key Features**

- Embossed scale encourages user to properly proportion chemicals
- Tapered neck provides a more comfortable grip when used with a trigger sprayer
- Extra bottles ideal secondary containers for diluted Rescue® Concentrate or to be refilled with Rescue® Ready-to-Use

PRODUCT

32 oz Bottle

CLIPPER #

0240032

MISCELLANEOUS ACCESSORIES

**RESCUE® WORKPLACE/SECONDARY
CONTAINER LABELS**
**Key Features**

- Keep your Rescue® products safe, compliant, and organized
- Our workplace labels help you identify the product inside, lot number and expiry date
- Designed for labeling any secondary containers you use to store Rescue® Ready-to-Use or diluted Concentrate solution, such as spray bottles

Order for free at RescueDisinfectants.com

**RESCUE® CONCENTRATE
5G BUNG WRENCH CONTAINER OPENER**
**Key Features**

- Designed to open the 5G Rescue® Concentrate eco-container secured cap, adding an extra layer of safety
- Heavy Duty durable and strong plastic
- Reusable

PRODUCT

Bung Wrench for 5G Containers

CLIPPER #

WRN001

PRECISE™ TEST STRIPS
**Key Features**

- Use to test and confirm the diluted solution for Rescue® Concentrate
- Ideal to validate newly set-up mixing stations and hose end foamers with automatic dilution
- These strips are easy to use dip-and-read strips and will confirm the 1:16, 1:32, 1:64 and 1:128 dilutions for added confidence

NOTE: Water pressure varies widely. Test strips are **highly recommended** to set up and to routinely confirm desired dilutions.

METERING TIPS


For use with compact airless foamers, mixing stations and bathing system

FOAMER LID


For use with compact airless foamers


BRACKET ASSEMBLY


For use with foamer lid for compact airless foamers

GARDEN HOSE GUN


For use with compact airless foamers
No connectors or washers

4-HOLE RINSE NOZZLE


For use with Model 250 compact airless foamer
Comes with QD Plug

HDPE 32 oz BOTTLE


For use with compact airless foamers, mixing stations and bathing system

METERING TIP HOLDER


For use with foamer lid for compact airless foamers

QUICK CONNECT


For use with compact airless foamers

SPREADER NOZZLE


For use with compact airless foamers

COMPACT FOAMER SPRAYER RACK


For use with compact airless foamers

PRODUCT**CLIPPER #**

Precise™ Test Strips	AHP425
Metering Tips - 20 pack	443798
HDPE 32 oz Bottle	709082
Foamer Lid	709090BLU
Metering Tip Holder	491308
Bracket Assembly - Stainless Steel	709079-BA
Quick Connect – Stainless Steel	350474SS
Garden Hose Gun – inlet screen/filter	320423
Spreader Nozzle	180325
4-Hole Rinse Nozzle	VC-1016
Storage Rack	224301

NOTE: Virox Technologies Inc. is the manufacturer of Rescue® Disinfectants.

Replacement parts for equipment should be sourced from Lafferty Equipment Manufacturing, LLC.

Toll Free: 1-800-999-2820
www.laffertyequipment.com

